

# Korea Engineering Consultants Corp.



# 가 KECC가 !

KECC!

## Contents

### Overview

03 CEO  
04  
06

### Core Business

08  
10  
12  
14  
16  
18  
20 /  
22  
24  
26  
28

### Green Business

30  
32  
34  
36  
38  
39  
40

## CEO Message »



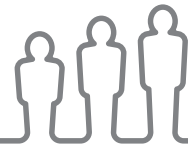
“  
가 Engineering 가 1963 KECC  
KECC가  
(CM) One-Stop KECC  
KECC  
이 강록

# KECC 가 !

## 1960-1979



## 1980-1999



## 2000-2009



## 2010-



1963.03.09  
( )

1966.08.01

1973.12.26  
( )

1975.11.13  
( )

1976.09.24  
( )

1979.06.05  
( )

1982.12.24  
( )

1985.06.27  
( )

1989.12.30  
( )

1990.01.11  
가 ( )

1993.07.25  
가 ( )

1994.02.28  
( )

1994.05.13  
( )

1995.08.28

1995.11.09  
( )

1995.11.17  
· ( )

1997.04.22  
· ( )

1997.08.20  
ISO 9001

2001.06.15  
가 ( -031 )

2001.10.12  
( -02079 )

2002.02.19  
가 ( 32 )

2002.06.05  
( 165 )

2002.07.09  
( 21 )

2003.03.20  
( 20030135 )

2004.08.19  
ISO 14001

2005.02.01

2006.04.12  
( )

2007.02.01

2007.08.02  
( )

2008.02.12

2008.06.17  
( )

2009.01.30  
( )

2010.08.24  
( 5,000 500 )

2010.10.25

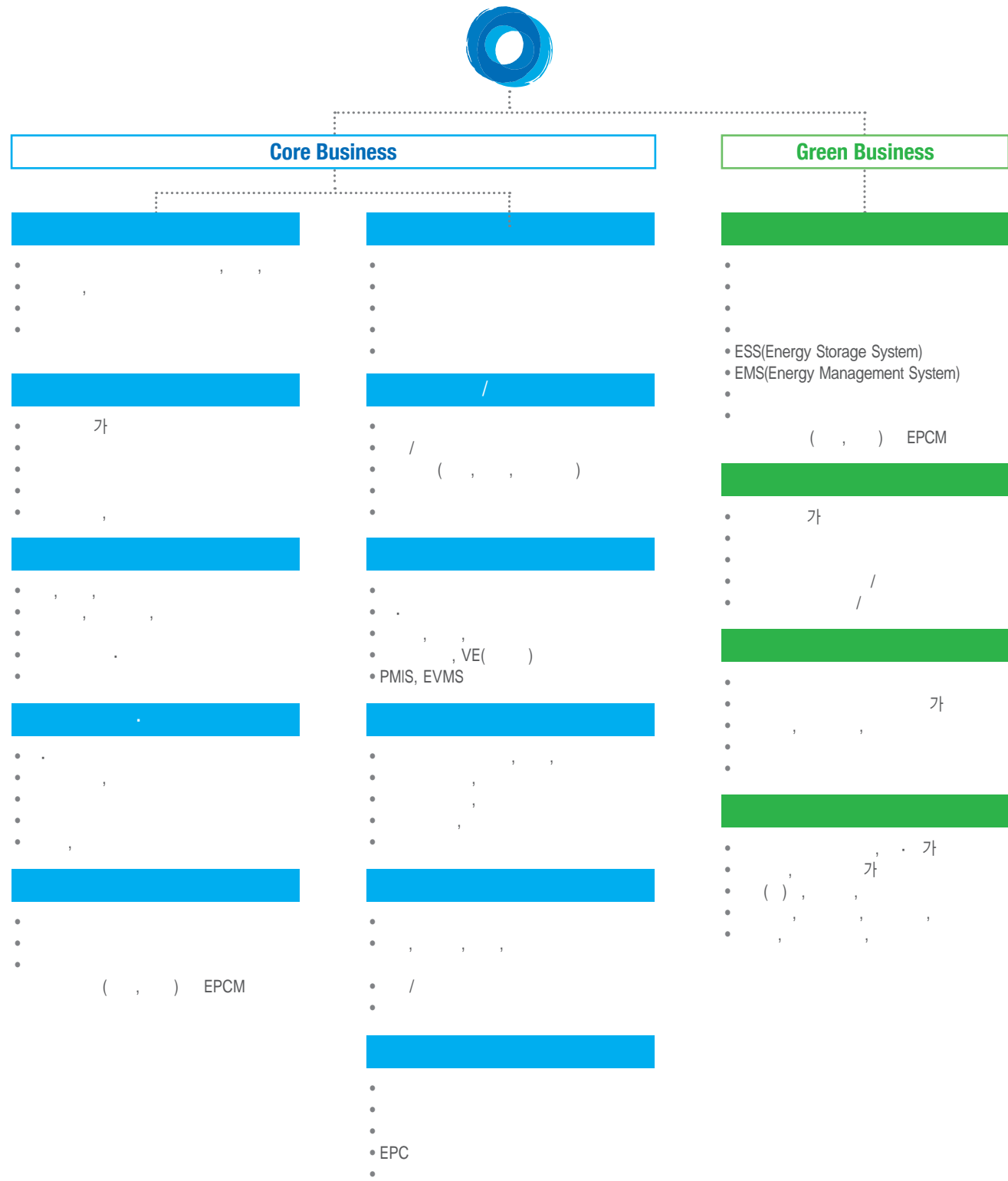
2010.12.09

2011.04.27  
( )

2011.04.28  
가

2012.03.21  
KEPIC

2014.08.01  
GLOBAL ENR 202



# Core Business

EPCM

# Roads and Airports

가 . 1970 가  
 가 , 88  
 KECC  
 / / / /  
 • ~ (5 ) • ( )  
 • ~ (4 ) •  
 • ~ (20 )  
 • ~ (4, 9 )  
 •  
 • ~ ((2 )  
 • ( ~ ) • 00 T/K  
 • ~



- - 
  - : 110km/h, : 118km
  - : 4 (23.4m)
- - 2000 12 49 6 m<sup>2</sup>
  - 2 , 4 1 2
  - 4
  - 
  - 가
  - 
  - 
  -
- BMW
  - 
  - ( ) : 2.61km
  - Accelerating / Breaking course : 1,440m
  - Handling course : 970m
  - Hill extension : 110m
- - 
  - (4000m x 60m) 2
  - 
  - 
  - Multiple course : 11,000m<sup>2</sup>
  - Circle course, Dynamic course, X drive(Off-Road)

# Structure

1963

KECC

- T/K (2) T/K
- ~ (3) 가 T/K
- ~ 가 T/K
- ~ 가 T/K
- T/K
- T/K
- Eco-Highway T/K
- 1 ( ) 2 T/K
- 1 ( ) 2 T/K
- 9 905
- ( ~ ) 4 T/K
- 24 ( ~ ) T/K
- T/K



•

- : ( 280m)
- : 450m, : 11.7m(2 )
- : 1984
- 가 : F/C 가

••

- : ( 500m)
- : 1,345m( 1,020m, 325m), : 14.0m(2 )
- : 3
- 가 : F/C 가

•••

- : 2
- : 112m, : 45.3m(8 )
- : 가

••••

- : ( 120m)
- : 1,455m, : 27~39.2m(6 )
- : 가

# Transportation

- 5
- 2 ( )
- ( ~ ) 가



- : 5km, : 3.5km

- : 876,976.0㎡

- : 9.26km

- : 9.26km

# Water and Wastewater

, KECC가

. 7,655 m<sup>3</sup>/

, 400 m<sup>3</sup>/

, 50

( , , , ...)

( , , , ...)

(BTL)

- District Capitals Urban Water Supply Project (Detailed Design and Construction supervision contract)
- Water Facilities Improvement of Chanchamayo in Peru
- Water Supply System Development for the Lembu-Imbu Region in Kinshasa city Democratic Republic of the Congo DR



• 3, 4

- 3 : 34  
595,000m<sup>3</sup>/  
1 , 3 , 135.9km
- 4 : 32  
704,000m<sup>3</sup>/  
2 , 3 , 152.9km

•••

- : 125,000m<sup>3</sup>/
- : 1 , 4 , 8,372m<sup>2</sup>
- : D800mm(L=2.0km), D900(L=1.1km)
- : D1,100mm(L=1.0km)

•• 가

- : 13,500m<sup>3</sup>/
- : 4,000m<sup>3</sup>/ ( )
- : D700mm, L=1.4km( 0.7km, 0.7km)

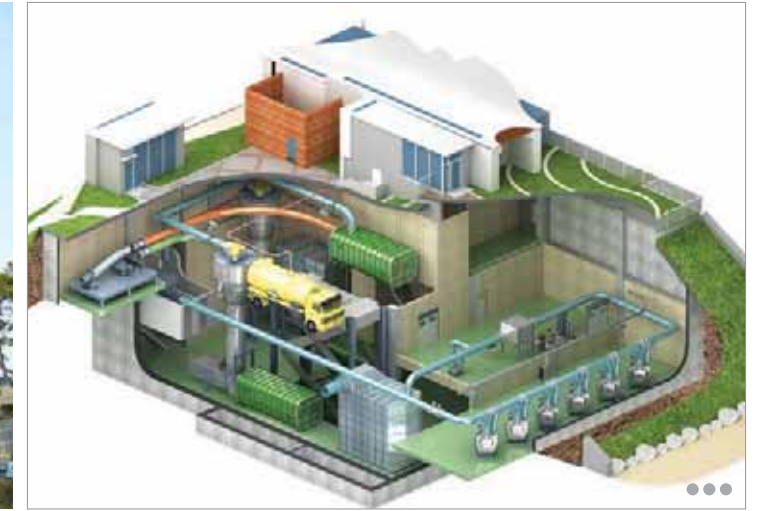
••••

- : 1,150,000m<sup>3</sup>/
- : 360,000m<sup>3</sup>/
- : D100 ~ D600mm, L=4.7km

# Plant (Power and Energy Environment Industrial)

( , , )

- 가
- EPCM
- ( )
- 2
- 가 (1,2 )
- 3
- / 가
- 2 EPC



•

- : 555MW
- : 396Gcal

••

- : 200 /
- : 4,750kW

•••

- : 27 /
- : , ,

••••

- 2
- : 1 300Kg/ , 2 900Kg/

•••••

- 가 가
- Software





# Supervision

- ~
- 1 ( )5
- 가
- 
- 
- (2 )
- 
- Lae (1 ) ( )
- -Koshi (Package2)( )



- ~
- 2011.04 ~
- : 7,473
- : L=27.38km
- : 5 , L=9.89km
- : 50 , L=5.18km
- : 2 , L=3.45km
- : 5

- 1998.12 ~ 2008.02
- : 2,010
- : Q=500,000m<sup>3</sup> /

- 2008.07 ~ 2010.02
  - : 892
  - : 662,627m<sup>2</sup>
- CM

- 2009.04 ~
  - : 1,483
  - : Q=250,000m<sup>3</sup> / , 3
- CM







# New Renewable Energy

## Green Energy

( ), (Energy Storage System)

, Energy Storage System(ESS), Energy Management System(EMS), EPCM

- (40MW) 가
- (7.5MW) (EPC)
- (2.0MW) (EPC)
- (EPC)
- Wee



• - : 40MW(2MW x 20 )

•• - : 7.5MW EPC

••• - : 2.8MW(0.4MW x 7 ) EPC

•••• - : 가  
- : 260 /

••••• - :  
- : 1,000 /

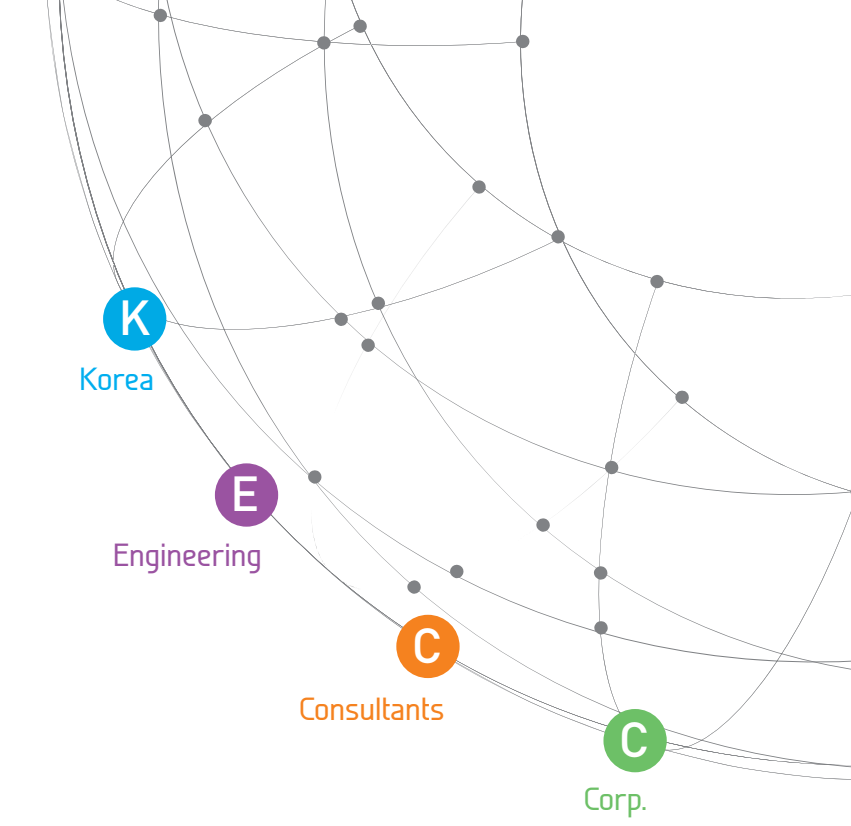
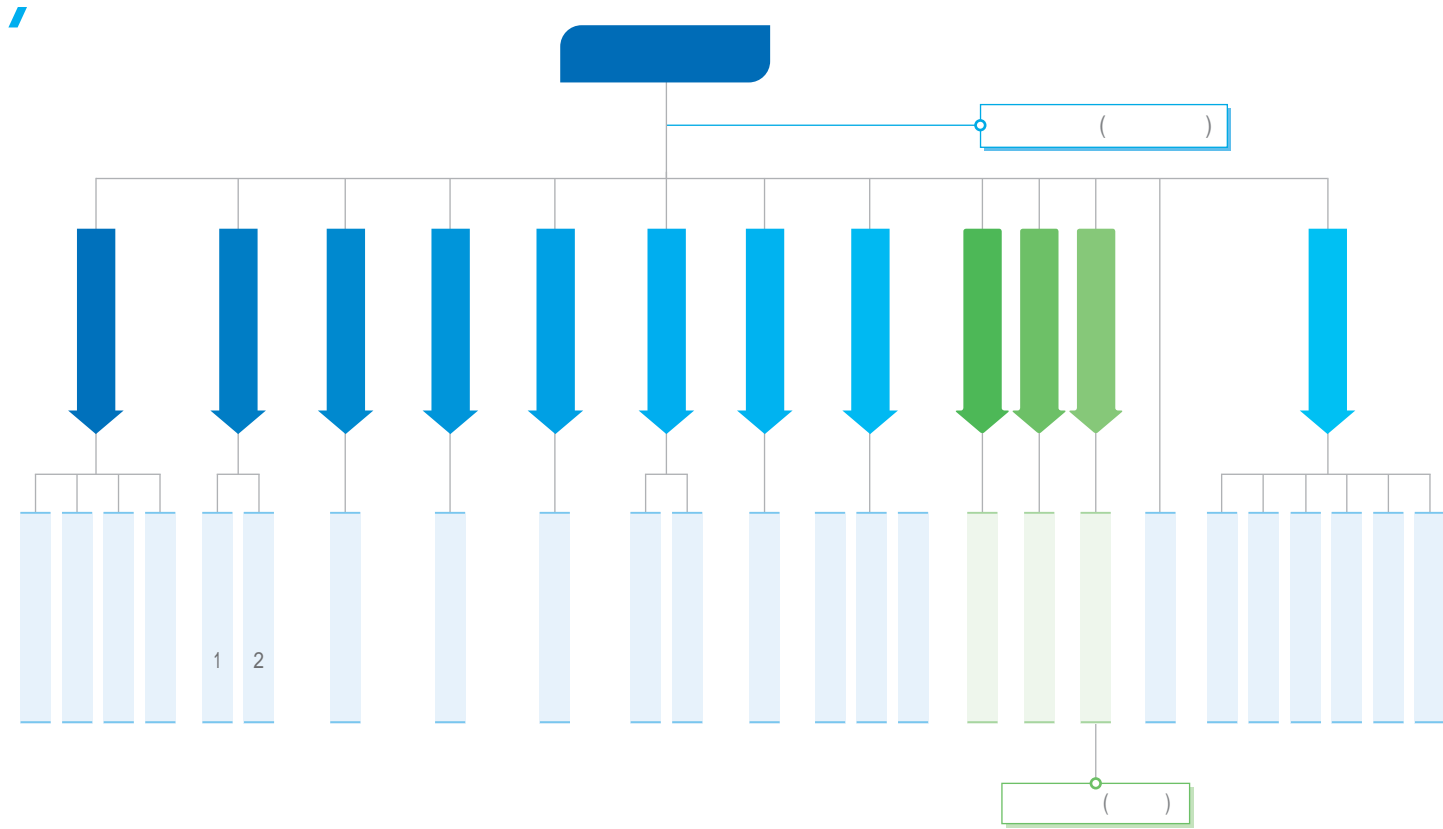








Organization



# Jump Into a Global Leader

	8	11	9	2	6	36
	10	12	8		4	34
	5	4	1	2	1	13
	7	6	1	1	2	17
	26	19	18	32	14	109
	16	29	5	19	9	78
	20	24	30	5	11	90
	29	4	2	28	6	69
	14	13	9	40	10	86
	6	19	11	3	4	43
	3	9	-	-	1	13
	12	16	3	-	7	38
	-	9	-	3	2	14
( , )	83	267	8	3	98	459
	1	7	-	-	1	9
	1	6	1	-	52	60
	1	-	1	2	6	10
	5	6	3	6	2	22
	247	461	110	145	237	1,200

가